



# Wild Essex

## october nature news



### Wild Essex events

For more info or to book a place on any walk, please email [jmgibson1959@btinternet.com](mailto:jmgibson1959@btinternet.com) or text 07503240387

#### NOVEMBER

Sunday 6<sup>th</sup> 7pm

**Free Zoom** presentation by Chris 'THE MAGIC OF MUSHROOMS'.

Please join us using this link:

<https://us05web.zoom.us/j/82382821145?pwd=UHVia0NGS3I5Uko1TDIMeS9jSzVDdz09>

Meeting ID: 823 8282 1145  
Passcode: 5ENy1q

Friday 18<sup>th</sup> 10.30am - 3pm

WALTON ON THE NAZE, CLIFFS, BEACH, GEOLOGY AND WILDLIFE.  
Half day walk. £20 per person

OR if you prefer a shorter session, 10.30 - 12.30 for beach/fossils. £10 per person

OR 1pm - 3pm Cliff top walk, incorporating bird watching, and John Weston Reserve/beach. £10 per person

Good facilities at the Naze with EWT discovery centre, café and loos. Pay and Display car park or 25 min walk from Railway station.

#### DECEMBER

Sunday 11<sup>th</sup> 7pm

**Free Zoom** presentation by Chris 'WILD ESSEX, THIS YEAR & NEXT'.

Watch out for the link in the next newsletter.

#### JANUARY 2023

Sunday 1<sup>st</sup> 2 - 3 pm

WILD FLOWER HOUR. Join us on a Free walk to check what wild flowers are blooming on this day. Results will be added to the BSBI database. Meet at Wivenhoe Jetty. Booking essential.



Hunter's moon – from our flat – named because at this time of year the sun set and moon rise are only 30 minutes apart, so more light to hunt by (if you like that kind of thing!).

### Welcome....

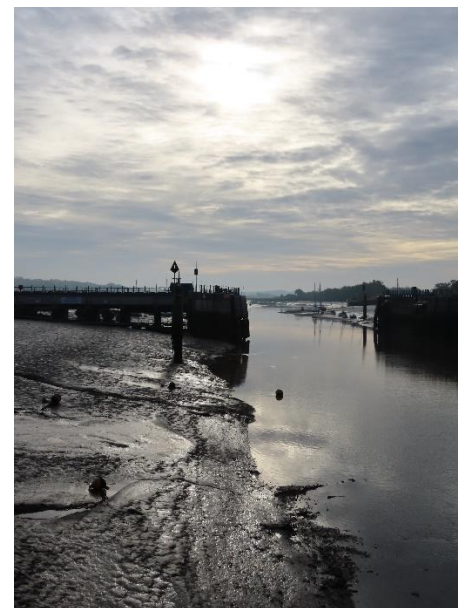
.....to our October edition of Nature News!

Thank you to everyone who got in touch last month with your thoughts on our new look newsletter! Mainly positive comments I am pleased to say, and we were touched to think that some of you missed the longer, perhaps friendlier, certainly wordier, version. Hoping we can combine the best of a shorter format with more personal insights in our future editions.

It has been a difficult month for us, as some of you know Chris has been plagued with a recurring nerve issue in his back/hip/knee. At its worst has meant that he has been unable to get out at all – pretty shattering for someone who loves being out in nature as much as he does. Fortunately, he has kept himself busy working on his forthcoming WILDGuides 'British and Irish Wild Flowers and Plants: a Pocket Guide'. (Watch this space for more info!). And pleased to report he is now making good progress... 😊.



Magpie Inkcap



Early morning Wivenhoe

Monday 30<sup>th</sup> 11am - 12noon

**TREE IDENTIFICATION FROM WINTER TWIGS AND BUDS**

King George's field, Wivenhoe, £5 per person.

**WHAT WE'VE BEEN UP TO**

**EXPLORING FUNGI AT WIVENHOE PARK October 30<sup>th</sup>.**

As it turned out the fungi was not at its best this year - that long hot summer drought has a lot to answer for! However, nature never disappoints, the trees were as wonderful as ever. It is always worth a trip to the University campus, and especially in Autumn in our opinion.

See here for our blog...

[#WildEssexWalks: autumn in Wivenhoe Park | Chris Gibson Wildlife](#)

**BRINGING NATURE TO YOU** We would be very happy to discuss any ideas you may have for a tailor-made nature experience. General cost £5 per hour per person, usual minimum group of 3 or £15 per hour.

**BRIGHTLINGSEA LIBRARY WILDLIFE GARDEN PROJECT** We are delighted to have been asked for input into this exciting project to Rewild the Brightlingsea Library Courtyard. A chance to create habitats for all manner of creatures and to provide an outdoor space for community projects.



Vapourer moth caterpillar



the rare Takahē bird

**NATURE NOTES**

Great to hear your nature observations. One reader's holiday notes from Berwick-on-Tweed (a place we know and love) included sightings of Kittiwakes, Shags, Guillemots, Oystercatchers and loads of gulls; and another couple of friends currently in New Zealand are finding all sorts of treasures including the rare Takahē bird – only 400 of these birds left – but being helped and protected there in nature reserves.

**GARDENING WITH WILDLIFE IN MIND**

The message this month – don't be too tidy! The treasures of autumn are good for all manner of wildlife for food and protection, and are a joy to behold for us human beings



For more see [Groundscapes | Chris Gibson Wildlife](#)

**TRANSITION TOWN**

Find out more about what you can do to help the environment locally by contacting Diane at [transwiv@gmail.com](mailto:transwiv@gmail.com) to receive her regular newsletter.

**PLEASE KEEP SENDING US YOUR PHOTOS AND NATURE NOTES!**

Special thanks this time to Val Appleyard, Cathy Burns, Susie Jenkins, Meg Martin and Catey Robey

**CONTACT US:-**

Email

[chrismothman@btinternet.com](mailto:chrismothman@btinternet.com)  
[jmgibson1959@btinternet.com](mailto:jmgibson1959@btinternet.com)

Phone

07887351596  
or  
07503240387

Twitter

#chrismothman1

Facebook

Wild Essex -Bringing Nature to You

