



Wild Essex

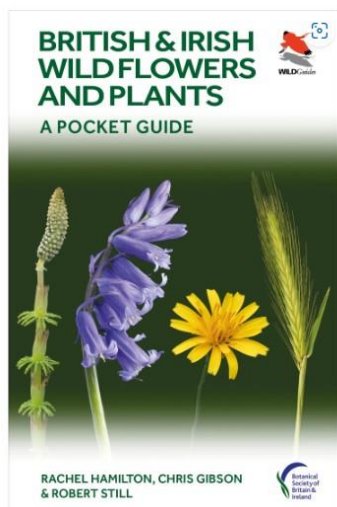
2024 list of events part 2



Other stuff

Chris' book is now at the printers... YEY!!
Quite a relief. Getting it to that stage has been a long and rather painful process!

It should be available from late May and we expect to have signed copies to sell at a discounted price. Otherwise they will be available at a good book shop near you, or on-line of course.



Welcome....

To our list of events for the second half of 2024. Hope you will be able to join us! (Book early to avoid disappointment 😊)

APRIL & MAY walks SOLD OUT

JUNE

Thursday 20th June 10am–12 noon £10 per person
BRIGHTLINGSEA 'EAST END'

Varied habitats abound and (if sunny) hopefully lots of insects too!

Possibly join us for a pub lunch after? (we will check out the possibilities for this and give more info to anyone who books)

Monday 24th From 8pm. FREE but PLEASE BOOK
SUMMER SOCIAL AND STAG NIGHT, WIVENHOE KGV

Enjoy a relaxed evening with other nature fans. We'll organise a couple of short walks then as dusk falls be on the lookout for Stag Beetles and Bats. Bring chairs and refreshments and we will make a night of it. 😊

JULY

Thursday 18th July 2.15pm – 4.15pm £10 per person
'OLD KNOBBLEY' AND OTHER ANCIENT TREES
Furze Hill, Mistley Meet at Mistley Railway Station

AUGUST

Tuesday 20th Evening. 7pm – late £10 per person
EVENING WALK AT UNIVERSITY OF ESSEX. Enjoy a walk in this beautiful park before sunset, then watch bats over the lakes. Bring refreshments and a torch!

BETH CHATTO'S GARDEN

'Meet the Naturalist' 11am – 1pm

Chris will be leading (weather permitting) some FREE wildlife walks around Beth Chatto's Garden (Elmstead Market) on the following days: (Please note entrance fee to the garden still applies). No need to book. Meet at 11.00 or 12.00 outside the Visitor Information Centre.

Fri 19th APRIL

Fri 17th MAY

Fri 21st JUNE

Fri 19th JULY

Fri 2nd AUGUST

Fri 16th AUGUST

Fri 20th SEPTEMBER



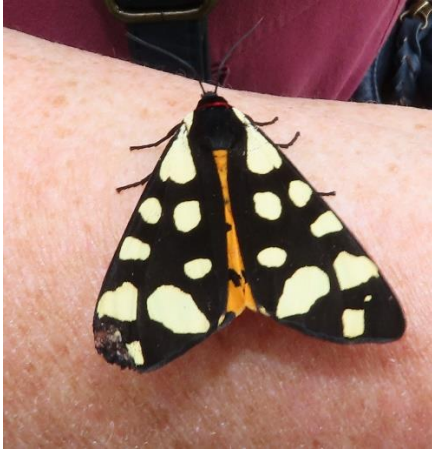
'Marvellous Moths'

Saturday 22nd JUNE AND 20th JULY
9am – 11am

[Marvellous Moths! - Beth Chatto's
Plants & Gardens \(June\)](#)

[Marvellous Moths! - Beth Chatto's
Plants & Gardens \(July\)](#)

Come and explore the insect life in this wonderful garden and see our moth trap (set overnight) opened. Have the first hour in the garden to ourselves!
£25 per person
Book directly with the garden



NATURETREK walks : full day walks in Essex, please book through the Naturetrek website

[The Wild Side of Essex: Exploring The Naze and Walton Backwaters \(Day Trip\) – Naturetrek](#) **10 May**

[Heath Fritillaries – Hockley Woods, Essex \(Day Trip\) – Naturetrek](#) **13 and 14 June**

[The Wild Side of Essex: Summer by the Stour Estuary \(Day Trip\) – Naturetrek](#) **16 July**

[The Wild Side of Essex: The Colne Estuary \(Day Trip\) – Naturetrek](#) **23 August**

SEPTEMBER

Thursday 12th Morning along **HARWICH FORESHORE** for plants and fossils, followed by (if weather OK) trip on Harwich Ferry for afternoon at **LANDGUARD POINT, FELIXSTOWE**
£10 for Harwich-only portion, £15 all day
Ferry extra (£5.50 each way)
Day starts at 10.30 at Harwich Halfpenny Pier

OCTOBER

Friday 11th '**COLCHESTER STATION TO STATION!**' Exact details to be decided but we aim to walk from Hythe to Colchester North station (or vice versa), taking in the river bank, wetlands and Roman wall which supports interesting flora. If possible we'll stop for refreshments and so this event may last more than the usual two hours. £10 per person whatever!

NOVEMBER

Saturday 2nd 10am – 12 noon £10 per person
FRUITS AND FUNGI

We will explore Wivenhoe's cemeteries, both old and new, for fungi etc, then walk to the top of KGV and probably continue down to the river via Ferry Marsh. Details to be decided nearer the time.

.....

FREE 45 MINUTE ZOOM PRESENTATIONS

NOVEMBER

Sunday 3rd 7pm ZOOM '**WHAT'S IN A NAME?**' the science of naming plants.
See link in October Newsletter

DECEMBER

Sunday 1st 7pm ZOOM '**WILDESSEX REVIEW OF THE YEAR**'.
See link in November Newsletter

Of course, we reserve the right to cancel/amend any of the above should the need arise, eg due to ill health, severe weather etc. Hope to see you on some of the above events. Also just to say that as always should you no longer wish to receive these emails, please just drop me a line and I'll sort it.

CONTACT US:-

Email

chrismothman@btinternet.com
jmgibson1959@btinternet.com

Whatsapp

07503240387

Phone

07887351596

or

07503240387

X (Twitter)

#chrismothman1

Facebook

Wild Essex -Bringing
Nature to You
