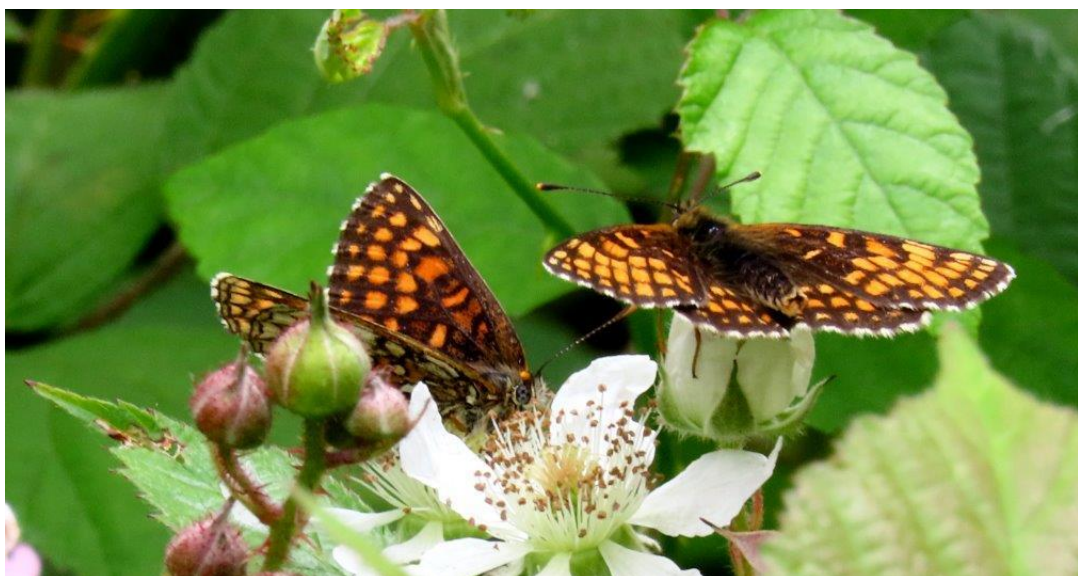
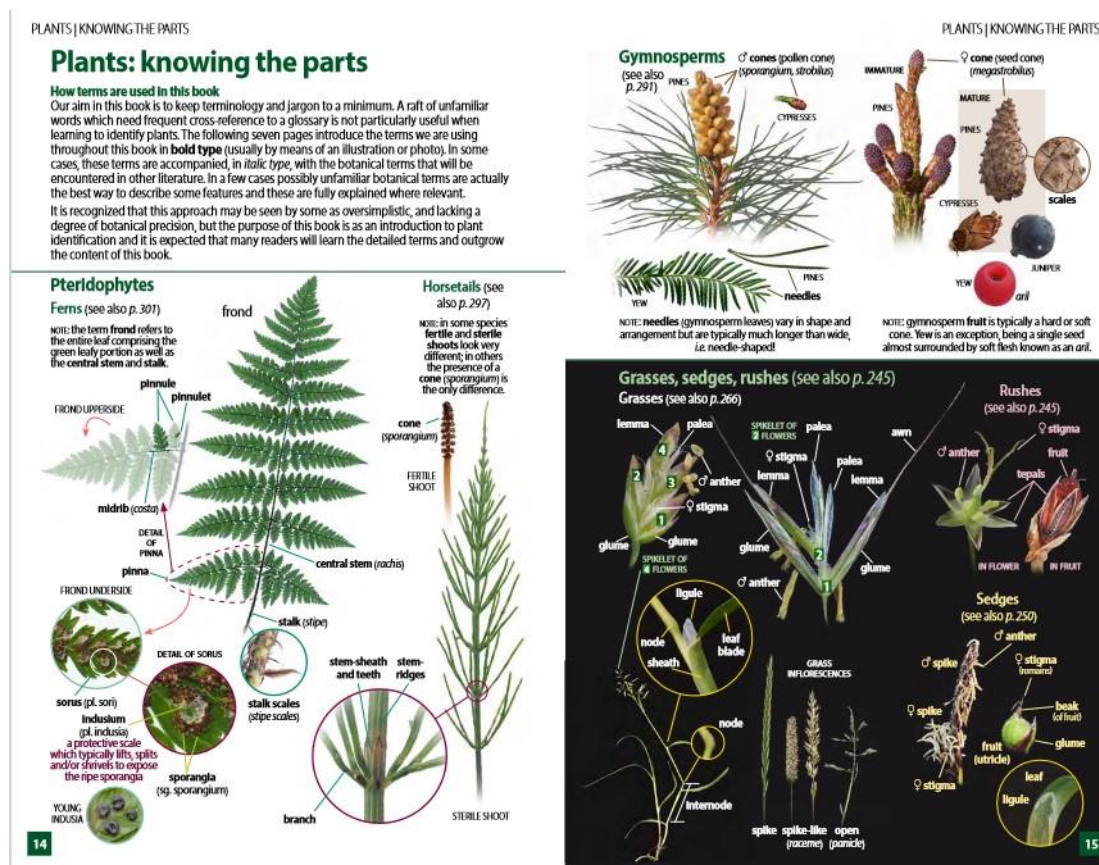


[illegible]

A large, ancient, leafless tree with a thick, gnarled trunk and sprawling branches, standing in a grassy field with other trees in the background. The tree's trunk is heavily textured and shows signs of age and decay. Its branches are bare and reach out in various directions, some drooping low to the ground. The ground is covered in dry grass and fallen leaves. In the background, a line of other trees is visible under a clear sky.



At last our Flower Book is in print (and we have copies to sell at a discounted price of £10 (RRP £12.99)). To whet your appetite see below for an example of one of the spreads. Get in touch if you would like a copy (we can deliver to addresses to Wivenhoe, or arrange a mutually convenient place to meet – we cannot post out copies unfortunately).





Our old friends – Stag Beetles.
harmless – those horns are just
re much of a bite. The female (R)
y nip!. We are lucky in Wivenhoe to
for these spectacular beasties.

ORCHIDS – those most mysterious of plants

[illegible]

Chris has a large repertoire of fully illustrated presentations, all suitable for giving to clubs, groups etc, in person or by zoom. [Talks | Chris Gibson Wildlife](#) Subjects include 'Gardening with Wildlife in Mind'; 'The Wild side of Beth Chattos'; 'Creatures of the night' plus many others on topics concerning the coast, botany, invertebrates etc. Do get in touch if you would like more details.

[illegible]

We would be very happy to discuss any ideas you may have for a tailor-made nature experience. Perhaps advice on Rewilding your garden, a moth trapping evening or bespoke walk with a group of friends. General cost £5 per hour per person, usual minimum group of 3 or £15 per hour.

WIVENHOE BIODIVERSITY GROUP –
contact markhalladay1@outlook.com



Bee Orchid



Common Spotted Orchid



Pyramidal Orchid

In 2024 our friends in PACE in Manningtree are trying to make this famous local show more sustainable. In their own words ‘ (this year) PACE will be encouraging visitors to come **on foot, by bicycle**, or with a **full car** (4 or more persons). This is important because it reduces greenhouse gas emissions and reduces congestion on local roads. To recognise those that make an effort, we will be running a PRIZE DRAW - everyone that comes with a **full car, by bike** or **on foot** will have free entry into this Draw. There will be 8 Cash Prizes (First Prize £200), and each prize comes with a Bee Hotel (recognising the importance of pollinators) and a £20 voucher for the Manningtree Wholefood Store (recognising the importance of local shops).’



BLOGS! As many of you know Chris writes regular blogs on all kinds of topics – flowers, bugs, places etc. You can have a browse here [Blog | Chris Gibson Wildlife | Wildlife and Nature Photographer, Essex](#) and if you like what you see, you can sign up to receive a notification when a new one goes online.

Special thanks this time to all in our Whatsapp group for their interesting posts and photos throughout the month, especially Dave Green, Lesley Mackie, Julia Mason and Ginny Waters, plus Pippa Allerton and Val Appleyard.

CONTACT US:-

Email

chrismothman@btinternet.com
jmgibson1959@btinternet.com

Whatsapp

07503240387

Website

www.chrisgibsonwildlife.co.uk

Phone

07887351596

or

07503240387

X (Twitter)

#chrismothman1

Facebook

Wild Essex -Bringing
Nature to You